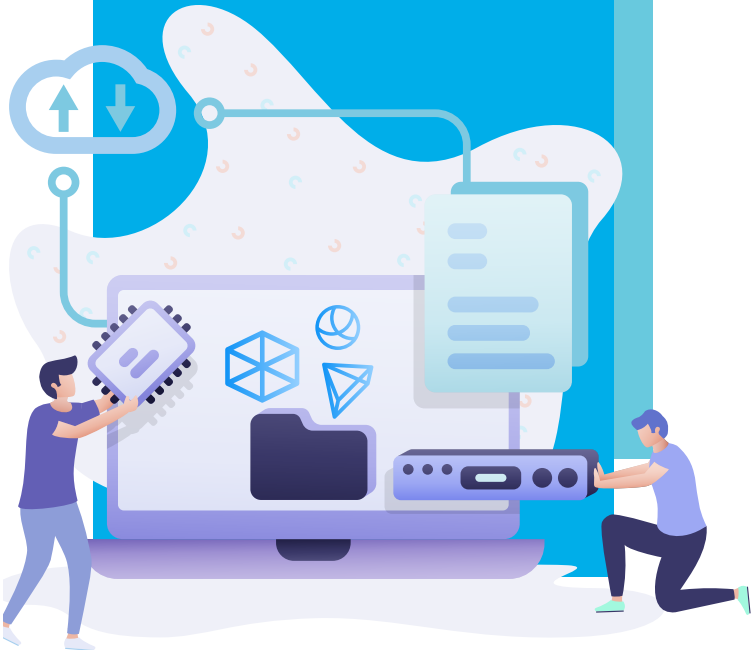


Invitation to join our Pilot Project

Data Integration in
Industrial Digital
Supply Chains



MOST COMMON RESULT OF 150 RESEARCH INTERVIEWS

“AM DOES NEED A DATA ECOSYSTEM THAT STRETCHES FROM THE INITIAL DESIGN TO THE FINISHED PART”

“How to manage a series of complicated, connected, and data-driven events”

“Could a Digital Thread for AM become a solution”

THE DEVELOPMENT OF INDUSTRIAL AM NEEDS

SOFTWARE INFRASTRUCTURE FOR DATA

- Capture
- Availability
- Discovery while securing IP

TOOLS FOR DATA

- Mining
- Federation
- Integration

BEST PRACTICES

CULTURAL SHIFTS

- Ensure governance policies for data capture
- Platforms for collaboration
- Negotiation of existing and new IP rights
- Controlled access to data

QUALITY STANDARDS

LEVERAGING THE COLLABORATIVE NATURE OF

THE GOALS OF THIS RESEARCH PROJECT

(1) UNDERSTANDING THE COMPLEX INTERPLAY OF MATERIALS, PROCESSES AND GEOMETRY

- To optimize materials, processes and geometry
- To increase performance while reducing weight
- New materials yielding novel microstructures
- improved manufacturability

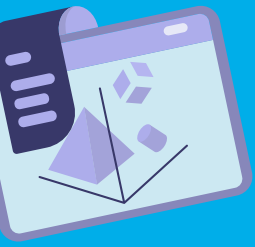
(2) IMPROVING MANUFACTURING PROCESSES THROUGHOUT THE AM SUPPLY CHAIN

- To increase efficiency and lower costs
- To gather real-time interpreted data of connected manufacturing operations
- Feedback for adapting designs, materials, manufacturing processes

(3) SUPPORTING REQUIREMENTS FOR CERTIFICATION

- Parts (design, control, manufacturing)
- Facilities (preparing and production)

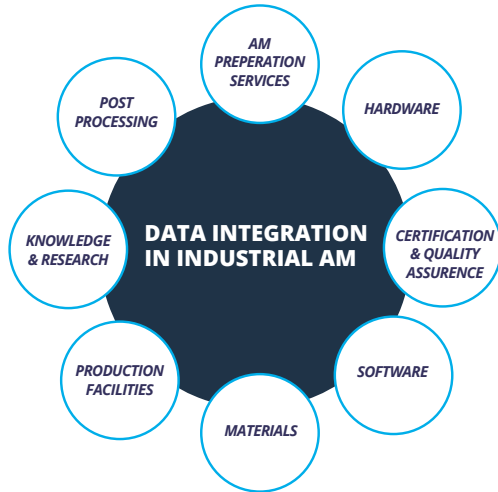




HOW TO JOIN THIS IMPORTANT RESEARCH PROJECT

This Project leverages the collective knowledge of the entire AM industry

- Based on international standards
- In cooperation with supra-supra-national organisations
- Interactive collaboration between partners, groups and sectors



FIRST STEPS

- All partners are invited to play a role and help build the structure
- Working groups will be created on specific problem areas
- Active role to manage groups/segments of the AM industry
- Setting up realistic timetables to achieve targets

Please register at

<https://www.sdamalliance.com/data-integration>

For more information: Mr. Roelof Kramer
(roelof.kramer@sdamalliance.com)

www.sdamalliance.com

